

Virtual Remote Control



Main Control

For assistance on a specific item, please click on the specific area

The Virtual Remote Control has access to the following modules:

[Wave Player](#)

[MIDI Player](#)

[Audio CD Player](#)

[AVI Player](#)

[Call Center](#)

[TV Module](#)

Most functions can be access via [Keyboard Shortcuts](#) while the module is active.

Not all modules will be available in all systems.

Power

This button will turn off and close the Virtual Remote Control.

Virtual Remote Control

Virtual Remote Control and the Virtual Remote Control Logo are trademarks of Packard Bell Electronics, Inc. The Virtual Remote Control program is copyright 1994 by Packard Bell Electronics, Inc.

3D Sound Toggle

This button will toggle between normal and 3D Sound. The 3D Sound is only available from stereo sound sources. While the majority of Compact Discs and MIDI files are in a stereo format, most AVI and WAVE files are in a mono format.

Volume Controls

Increase or Decrease the volume of the active module by clicking on the + or - areas on this button.

Minimize



Minimize the Virtual Remote Control to an icon.

Double-click on the icon to restore the Virtual Remote Control to full size.

Help

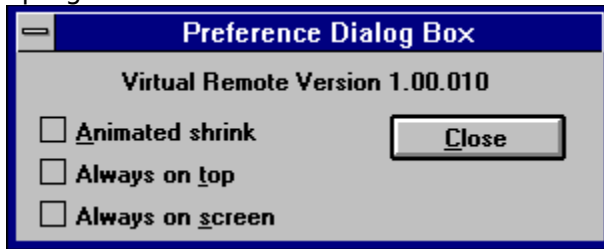
Clicking on this button will access the help file for the active module.

Volume Graph / Packard Bell Logo

This area will display the Volume Graph when you increase or decrease the volume on the active module. After a few seconds, the Packard Bell logo will reappear.

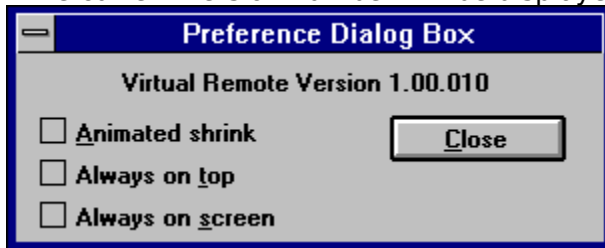
Preference

This button will access the Preference Settings and display the version number of the program.



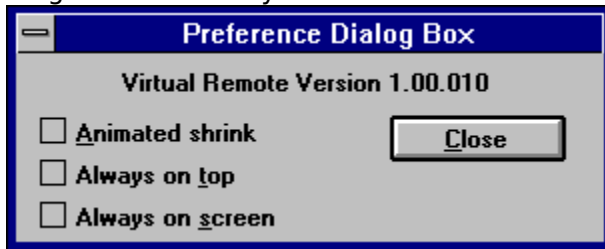
Virtual Remote Control Version Number

The current version number will be displayed in this dialog box.



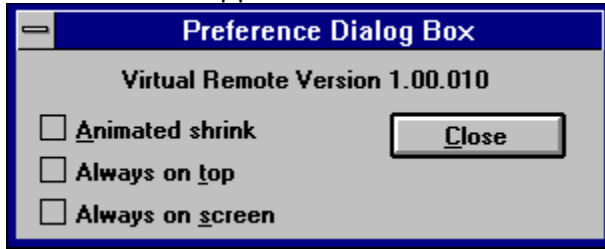
Animated Shrink

To enable the Animated Shrink feature of the Virtual Remote Control, be sure that the box is checked. To shrink the Virtual Remote Control, click on the Virtual Remote Control with the Right or Secondary mouse button.



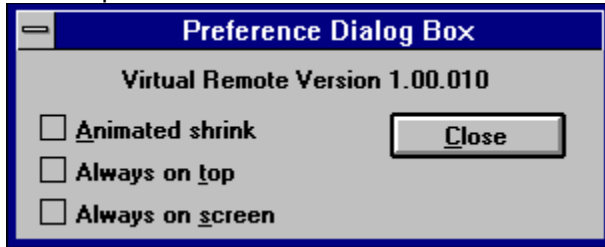
Always on top

When this box is checked, the Virtual Remote Control will always appear on top of all windows and applications.



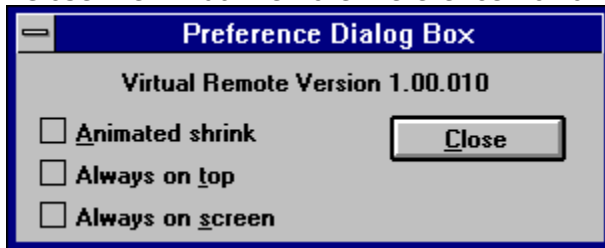
Always on screen

When this box is checked, the Virtual Remote Control will always be fully on-screen. If you attempt to move the Virtual Remote Control off-screen, it will snap back to be fully visible.



Close

Close the Virtual Remote Preference Box and Save any changes.



Module Select

The Virtual Remote Control has access to the following modules:

Wave Player

MIDI Player

Audio CD Player

AVI Player

Call Center

TV Module

Most functions can be access via Keyboard Shortcuts while the module is active.

Not all modules will be available in all systems.

Help

Display Help for the active module.

Status of pointer

Display the function of the tool where the pointer is located.

Status Window

Display the status of the active module.

This window will change depending on the module selected.

Mute

This button will toggle the Mute status between on and off.

Virtual Remote Control



Wave Player Module

For assistance on a specific item, please click on the specific area

[MIDI Player](#)

[Audio CD Player](#)

[AVI Player](#)

[Call Center](#)

[TV Module](#)

[Main Control](#)

Most functions can be access via [Keyboard Shortcuts](#) while the module is active.

File Name

The filename of the current wave file will be displayed here.

Play List Number

The number of the file in the play list will be displayed here.

Shuffle Mode

Click on Shuffle to enable the Shuffle Mode.

This mode will access the files on the play list in a random order.

List Mode

Click on List to enable the List mode.

This mode will access the files in the order that they are listed.

Loop Mode

Click on Loop to enable the Loop mode.

This mode will access the files in the order of the play list and when the end of the list is reached, the player will start over at the first file in the play list.

Single Mode

This mode will access the files in order of the play list, one at a time. The player will stop after each file in the list.

Play List

This button will access the Play List dialog box.

The Play List allows you to create a list of files to be played.



Play List Select

By clicking on these buttons, you can enter a number of a file to be played from the Play List.

These buttons will allow you to enter in a one or two digit selection number. If one digit is pressed and a second digit is not entered within a few seconds, the Virtual Remote Control assumes that a one digit number was chosen.

Stop

This button stops the player.

Play

This button starts playing the current file. Depending on the mode selected, the player will either play the next file or stop at the end of the current file. Also see List Mode, Shuffle Mode, Loop Mode and Single Mode.

Pause

This button pauses the current file. Click on this button again to continue playing the current file.

Record

This button starts the record mode so you may create your own wave files.

Previous

This button selects the previous file in the play list.

Rewind

This button moves backwards in the current wave file.

Fast Forward

This button moves forward in the current wave file.

Next

This button selects the next file in the play list

Virtual Remote Control



MIDI Player Module

For assistance on a specific item, please click on the specific area

[Wave Player](#)

[Audio CD Player](#)

[AVI Player](#)

[Call Center](#)

[TV Module](#)

[Main Control](#)

Most functions can be access via [Keyboard Shortcuts](#) while the module is active.

File Name

The filename of the current MIDI file will be displayed here.

Play List Number

The number of the file in the play list will be displayed here.

Shuffle Mode

Click on Shuffle to enable the Shuffle mode.

This mode will access the files on the play list in a random order.

List Mode

Click on List to enable the List Mode.

This mode will access the files on the play list in the order that they are listed.

Loop Mode

Click on Loop to enable the Loop Mode.

This mode will access the files in the order of the play list and when the end of the list is reached, the player will start over at the first file in the play list.

Single Mode

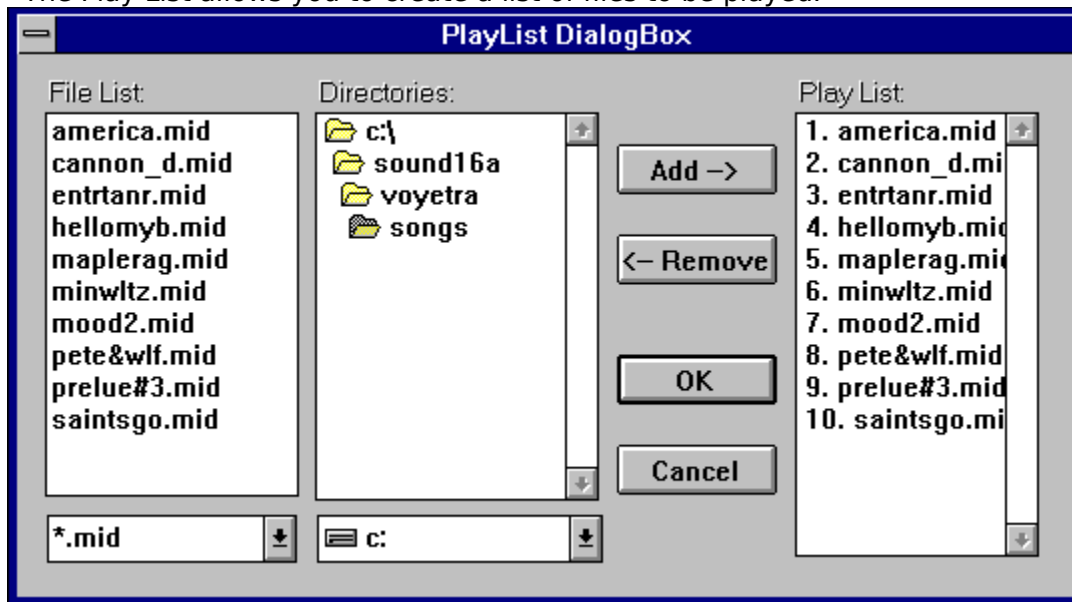
Click on Single to enable the Single Mode.

This mode will access the files in the order of the play list, one at a time. The player will stop after each file in the list.

Play List

This button will access the Play List dialog box.

The Play List allows you to create a list of files to be played.



Play List Select

By clicking on these buttons, you can enter a number of a file to be played from the Play List.

These buttons will allow you to enter in a one or two digit preset selection number. If one digit is pressed and a second digit is not entered within a few seconds, the Virtual Remote Control assumes that a one digit number was chosen.

Stop

This button stops the player.

Play

This button starts playing the current file. Depending on the mode selected, the player will either play the next file or stop at the end of the current file. Also see List Mode, Shuffle Mode, Loop Mode and Single Mode.

Pause

This button pauses the current file. Click on this button again to continue playing the current file.

Previous

This button selects the previous file in the play list.

Rewind

This button moves backwards in the current MIDI file.

Fast Forward

This button moves forwards in the current MIDI file.

Next

This button selects the next file in the play list.

Virtual Remote Control



Audio CD Player Module

For assistance on a specific item, please click on the specific area

[Wave Player](#)

[MIDI Player](#)

[AVI Player](#)

[Call Center](#)

[TV Module](#)

[Main Control](#)

Most functions can be access via [Keyboard Shortcuts](#) while the module is active.

CD Title

The title for the current disc inserted into the CD-ROM drive will be displayed here. You can edit the title via the CD Play List button on the Virtual Remote Control. The CD Title will be saved so the next time the disc is inserted into the CD-ROM drive, the information will be displayed automatically.

Also see [CD Name Dialog Box](#) in the [CD Track List](#) help item.

Track Name

The name for the current track playing will be displayed here. You can edit the track name via the CD Play List button on the Virtual Remote Control. The track name will be saved so the next time the disc is inserted into the CD-ROM drive, the information will be displayed automatically.

Also see [CD Track Dialog Box](#) in the [CD Track List](#) help item.

List Mode

Click on List to enable the List mode.

This mode will access the tracks on the play list in a random order.

Shuffle Mode

Click on Shuffle to enable the Shuffle mode.

This mode will access the tracks on the play list in a random order.

Loop Mode

Click on Loop to enable the Loop mode.

This mode will access the files in the order of the play list and when the end of the list is reached, the player will start over at the first file in the play list.

Single Mode

Click on Single to enable the Single Mode.

This mode will access the files in order of the play list, one at a time. The player will stop after each file in the list.

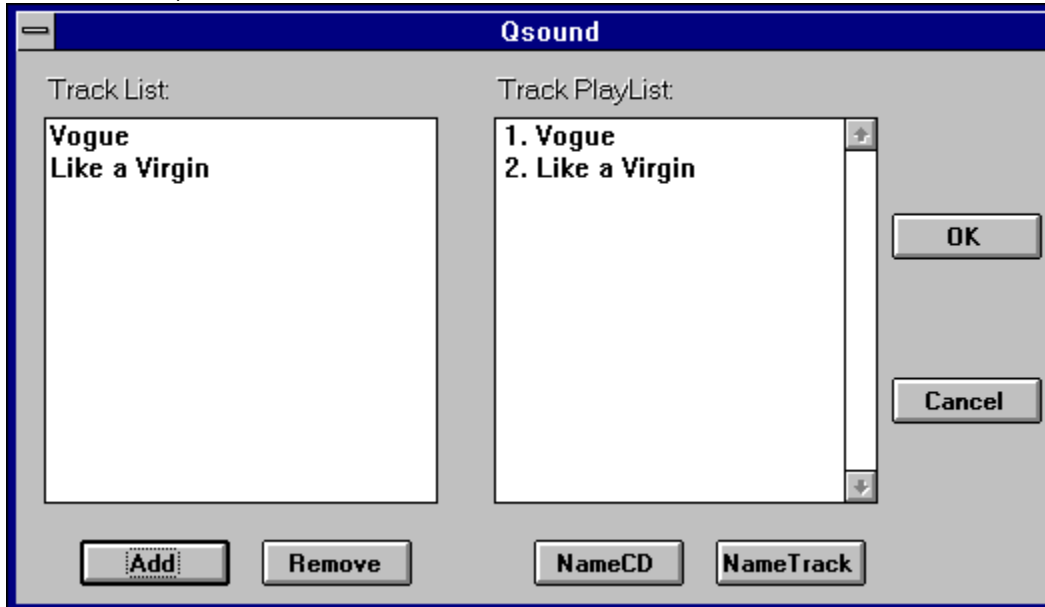
Track Number

The current track number will be displayed here.

Track List

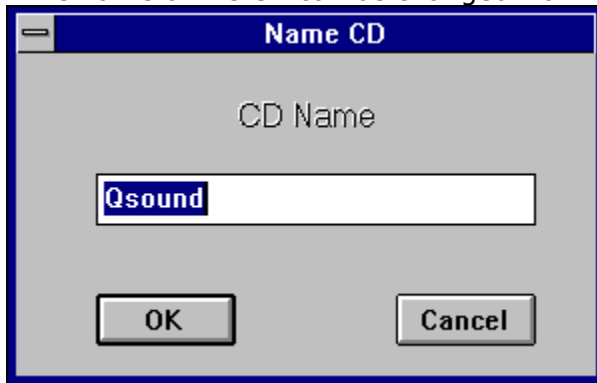
This button will access the Play List dialog box.

The Track List allows you to create a list of files to be played. You can change the CD Title and Track information by clicking on Name CD and Name Track buttons. For more information, click on the Name CD or Name Track buttons below.



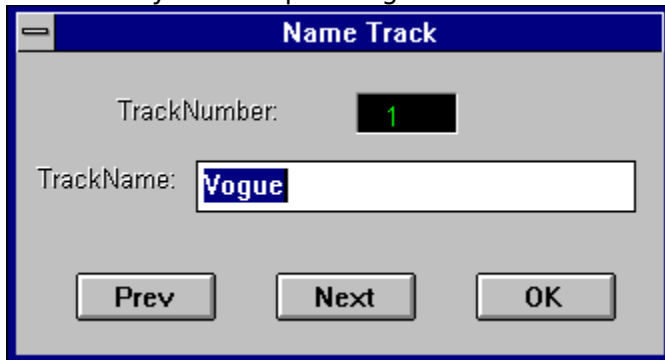
CD Name Editor

The name of the CD can be changed via this dialog box.



CD Track Editor

The name of the track can be changed via this dialog box. The Previous and Next buttons will allow you to step through all the tracks on the compact disc.



Track Select

By clicking on these buttons, you can enter a number of a track to be played from the Play List.

These buttons will allow you to enter in a one or two digit preset selection number. If one digit is pressed and a second digit is not entered within a few seconds, the Virtual Remote Control assumes that a one digit number was chosen.

Stop

This button stops the player.

Play

This button starts playing the current track. Depending on the mode selected, the player will either play the next file or stop at the end of the current file. Also see List Mode, Shuffle Mode, Loop Mode, and Single Mode.

Pause

This button pauses the current file. Click on this button again to continue playing the current file.

Eject

This button will eject the CD from the drive.

Previous Track

This button selects the previous track in the track list.

Rewind

This button moves backwards in the current track.

Fast Forward

This button moves forwards in the current track.

Next Track

This button selects the next track in the track list.

Drive Select

These buttons will allow you to select the CD drive to be used for audio playback
This button is only available on systems that have 2 factory installed CD drives.

Virtual Remote Control



AVI Player Module

For assistance on a specific item, please click on the specific area

[Wave Player](#)

[MIDI Player](#)

[Audio CD Player](#)

[Call Center](#)

[TV Module](#)

[Main Control](#)

Most functions can be access via [Keyboard Shortcuts](#) while the module is active.

File Name

The filename of the current AVI file will be displayed here.

Play List Number

The number of the file in the play list will be displayed here.

Shuffle Mode

Click on Shuffle to enable Shuffle mode.

This mode will access the files on the play list in a random order.

List Mode

Click on List to enable List mode.

This mode will access the files in the order that they are listed.

Loop Mode

Click on Loop to enable the Loop mode.

This mode will access the files in the order of the play list and when the end of the list is reached, the player will start over at the first file in the play list.

Single Mode

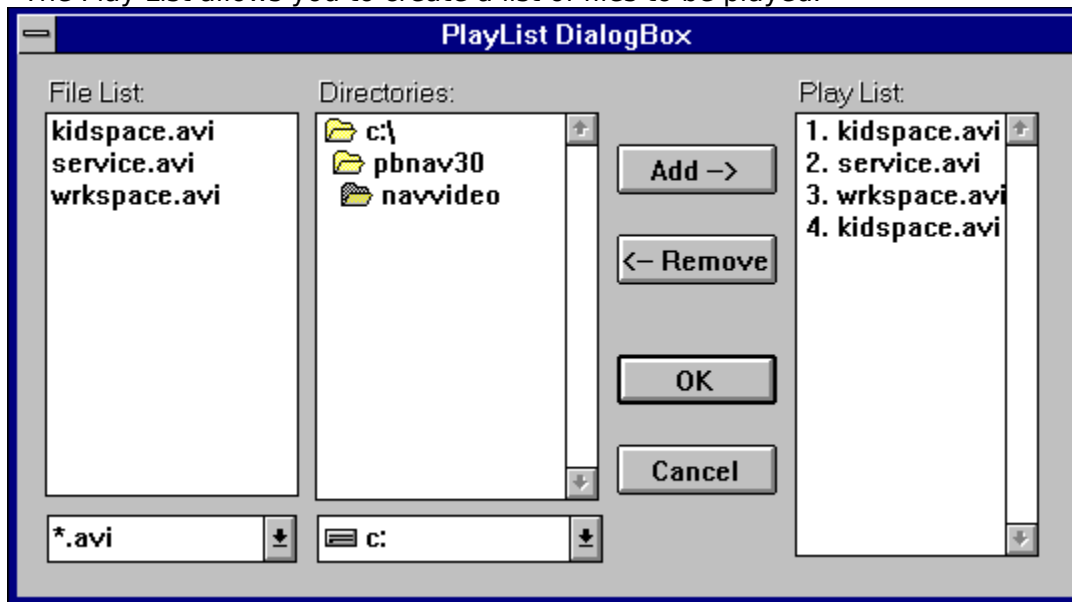
Click on Single to enable the Single mode.

This mode will access the files in the order of the play list, one at a time. The player will stop after each file in the list.

Play List

This button will access the Play List dialog box.

The Play List allows you to create a list of files to be played.



Style of Playback Window

This button switches between playing the AVI file in the Status Window or as a separate window.

Play List Select

By clicking on these buttons, you can enter a number of a file to be played from the Play List.

These buttons will allow you to enter in a one or two digit preset selection number. If one digit is pressed and a second digit is not entered within a few seconds, the Virtual Remote Control assumes that a one digit number was chosen.

Stop

This button stops the player.

Play

This button starts playing the current file. Depending on the mode selected, the player will either play the next file or stop at the end of the current file. Also see List Mode, Shuffle Mode, Loop Mode, and Single Mode.

Pause

This button pauses the current file. Click on this button again to continue playing the current file.

Previous

The button selects the previous file in the play list.

Rewind

This button moves backwards in the current file.

Fast Forward

This button moves forwards in the current file.

Next

This button selects the next file in the play list.

Virtual Remote Control



Call Center Module with speakerphone

For assistance on a specific item, please click on the specific area

[Wave Player](#)

[MIDI Player](#)

[Audio CD Player](#)

[AVI Player](#)

[TV Module](#)

[Main Control](#)

Most functions can be access via [Keyboard Shortcuts](#) while the module is active.

[If your system does not have the speakerphone feature, please click here to see the Call Center Module for your system.](#)

File Name

The filename of the current message will be displayed here.

New Messages

Click on New Messages to enable playback of New Messages.

Old Messages

Click on Old Messages to enable playback of Old Messages.

Message Number

The number of the current message will be displayed here.

Speed Dial Phonebook

This button will access the Speed Dial Phonebook so you can program up to 10 numbers to be dialed with the Speed Dial Buttons.

Clear Current Number Memory

This button clears the current number from Redial Memory.

Redial Current Number

This button redials the current number in memory.

Hang-up line

This button will hang up the telephone line.

Select Speed Dial Number

You can select any of 10 speed dial numbers that have been programmed into the Speed Dial Memory.

Play Current Message

This button will play the current message.

Stop Playing Current Message

This button will stop playing the current message.

Select Previous Message

This button selects the previous message.

Select Next Message

This button selects the next message.

Delete Current Message

This button deletes the current message.

Numeric Entry Pad

This button will display the Numeric Entry Pad. You can either click on the numbers or press the numbers on your keyboard.

Mailbox Selection

The Mailbox button will allow you to select the active mailbox. This button will only appear if you have created multiple mailboxes.

Hold

This button will place the caller on hold and optionally play music while the caller is holding.

Flash

This button will flash the hookswitch. This feature is used to activate optional calling features such as Call Waiting. For more information on these optional calling features, please contact your telephone company.

Mute

This button will mute the handset or microphone. You can still hear the caller, however they will not be able to hear you.

Speaker

This button will answer the phone using the Speakerphone. Be sure the microphone is plugged into the sound card.

Call Status

The status of the Call Center will be displayed here. This area is also used to display the number being dialed.

Dial

Insert Text Here.

Virtual Remote Control



Call Center Module without speakerphone

For assistance on a specific item, please click on the specific area

[Wave Player](#)

[MIDI Player](#)

[Audio CD Player](#)

[AVI Player](#)

[TV Module](#)

[Main Control](#)

Most functions can be access via [Keyboard Shortcuts](#) while the module is active.

[If your system does have the speakerphone feature, please click here to see the Call Center Module for your system.](#)

Virtual Remote Control



TV Module

For assistance on a specific item, please click on the specific area

[Wave Player](#)

[MIDI Player](#)

[Audio CD Player](#)

[AVI Player](#)

[Call Center](#)

[Main Control](#)

Most functions can be access via [Keyboard Shortcuts](#) while the module is active.

This module is only available on systems with a factory installed TV card.

Channel LED

The button will toggle the display of the current channel on the TV screen.

Channel Number

The current channel number will be displayed here if the TV screen style selected is a standard or maximized window.

Numbers

By clicking on these buttons, you can enter a channel number. These buttons will allow you to enter in a one to three digit channel selection.

Channel List

This button will bring up the dialog box to allow you to set your channel selections. For more information on this dialog box, select the HELP button when the box appears.



Style of TV Screen

This button switches between playing theTV in the Status Window or as a separate window, either as a standard window or a maximized window..

Video Select

This button will select the video source between the RF (or Cable) input and the Video (Composite) input.

Picture Controls

This button will access the Picture Controls dialog box, as shown below.

The dialog box will allow you to adjust the brightness, contrast, sharpness, color and tint of the picture. Selecting OK will save any changes made to the settings. Selecting CANCEL will not save any changes. Selecting DEFAULT will return the settings to the factory defaults.



Channel Tuner Controls

These buttons will tune up and down the channel list.

Virtual Remote Control

Keyboard Shortcuts

[Global Keyboard Shortcuts](#)

[Module Select Keyboard Shortcuts](#)

[AVI Player Keyboard Shortcuts](#)

[Audio CD Player Keyboard Shortcuts](#)

[MIDI Player Keyboard Shortcuts](#)

[Call Center Keyboard Shortcuts](#)

[TV Module Keyboard Shortcuts](#)

[Wave Player Keyboard Shortcuts](#)

Virtual Remote Control

Global Keyboard Shortcuts

Power **Alt-X, CTRL-X, Alt-F4**

To exit and turn off the Virtual Remote Control.

Volume **+, -**

+ to increase volume, - to decrease volume.

Minimize **End**

Minimize the Virtual Remote Control to an icon.

Source Select **Alt-S, CTRL-S**

Switch the source select mode.

List **Alt-L, CTRL-L**

Open the list dialog box.

Mute **M**

Mute the current source.

Numbers **0 to 9**

Input for the numeric pad.

Virtual Remote Control

Keyboard Shortcuts for WAVE Module

Stop **S, s**

Stop playing the current file.

Play **P, p**

Play the current file.

Pause **U, u**

Pause the current file.

Previous **V, v**

Move to the previous file in the play list.

Next **N, n**

Move to the next file in the play list.

Rewind **R, r**

Move backwards in the current file.

Forward **F, f**

Move forwards in the current file.

Virtual Remote Control

Keyboard Shortcuts for MIDI Module

Stop **S, s**

Stop playing the current file.

Play **P, p**

Play the current file.

Pause **U, u**

Pause the current file.

Previous **V, v**

Move to the previous file in the play list.

Next **N, n**

Move to the next file in the play list.

Rewind **R, r**

Move backwards in the current file.

Forward **F, f**

Move forwards in the current file.

Virtual Remote Control

Keyboard Shortcuts for Audio CD Module

Stop **S, s**

Stop playing the current file.

Play **P, p**

Play the current file.

Pause **U, u**

Pause the current file.

Previous **V, v**

Move to the previous file in the play list.

Next **N, n**

Move to the next file in the play list.

Rewind **R, r**

Move backwards in the current file.

Forward **F, f**

Move forwards in the current file.

Eject **E, e**

Eject the compact disc tray.

Virtual Remote Control

Keyboard Shortcuts for Call Center Module

This is the list of keyboard shortcuts for the Call Center Modules, with and without the Speakerphone feature. All features might not be available on your version.

Dial **D, d**

Dial the current number.

Clear **C, c**

Clear the last number memory.

Redial **R, r**

Redial the last number.

Hang **G, g**

Disconnect the current call.

Flash **CTRL-F**

Flash the hookswitch.

Hold **CTRL-H**

Place the current call on hold.

Mute **M, m**

Mute the microphone or handset.

Play **P, p**

Play the selected message.

Stop **S, s**

Stop playing the message.

Begin **B, b**

Go to beginning of the message.

Next **N, n**

Go to next message.

Delete **X, x**

Delete the message.

Dialer **numbers**

Enter the telephone number when the numeric key pad is active.

Key Pad /

Toggles the Numeric Key Pad.

Speed dial numbers

Select the speed dial preset to dial.

Speed dial Alt-numbers

Select speed dial when the number pad is active.

Virtual Remote Control

Keyboard Shortcuts for TV Module

Style **Y, y**

Toggle between TV viewing in the status windows or a separate window.

Channel **Up Arrow, Down Arrow**

The Up Arrow will increase the channel, the Down Arrow will decrease the channel.

Volume **Right Arrow,+ ,Left Arrow,-**

The Right Arrow or + key will increase volume. The Left Arrow or - key will decrease volume.

Virtual Remote Control

Keyboard Shortcuts for Module Selector

Audio CD **A, a**

Select Audio CD Module

Call Center **C, c**

Select Call Center Module

MIDI **M, m**

Select MIDI Module

AVI **V, v**

Select AVI Module

WAVE **W, w**

Select Wave Module

TV **?, ?**

Select TV Module

Virtual Remote Control

Keyboard Shortcuts for AVI Module

Style **Y, y**

Toggle between AVI playback in the status windows or a separate window.

Stop **S, s**

Stop playing the current file.

Play **P, p**

Play the current file.

Pause **U, u**

Pause the current file.

Previous **V, v**

Go to previous frame.

Next **N, n**

Go to next frame.

Rewind **R, r**

Jump backwards in the current AVI file.

Forward **Ff, f**

Jump forwards in the current AVI file.

Packard Bell Virtual Remote Help File

Version 2.00.00 GKH Release 1 12/28/94

This version contains information on the following modules:

- Wave Player
- MIDI Player
- Audio CD Player
- AVI Player
- Call Center
- TV Module

For Technical Assistance, please contact Packard Bell software support.

